

MONTHLY MEMBERSHIP PROGRESS REPORT

LOCATION FLORIDA

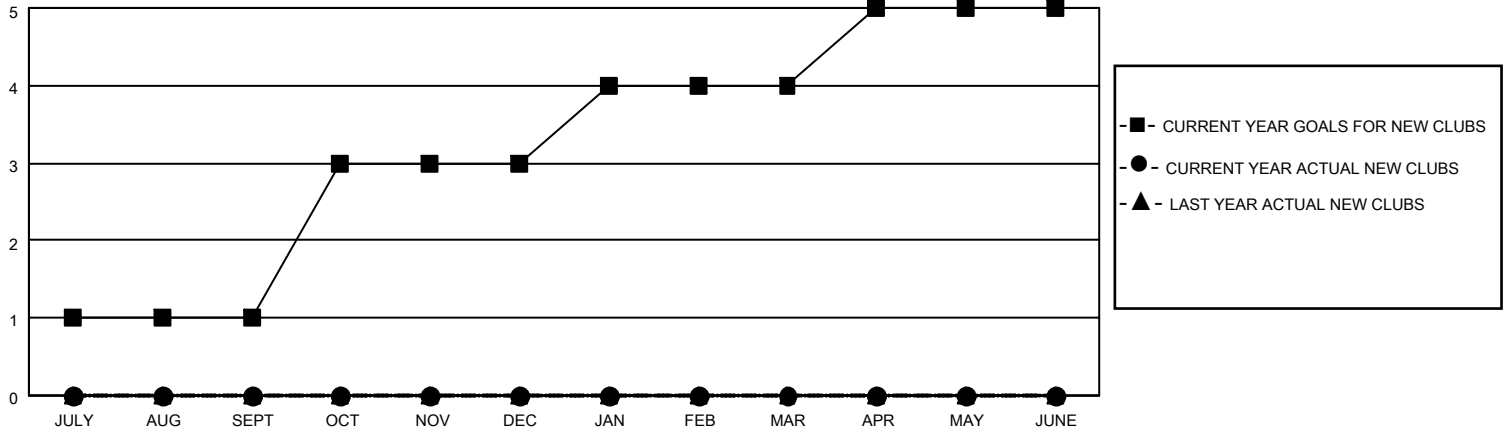
District 35 I

Results as of: 8/31/2021

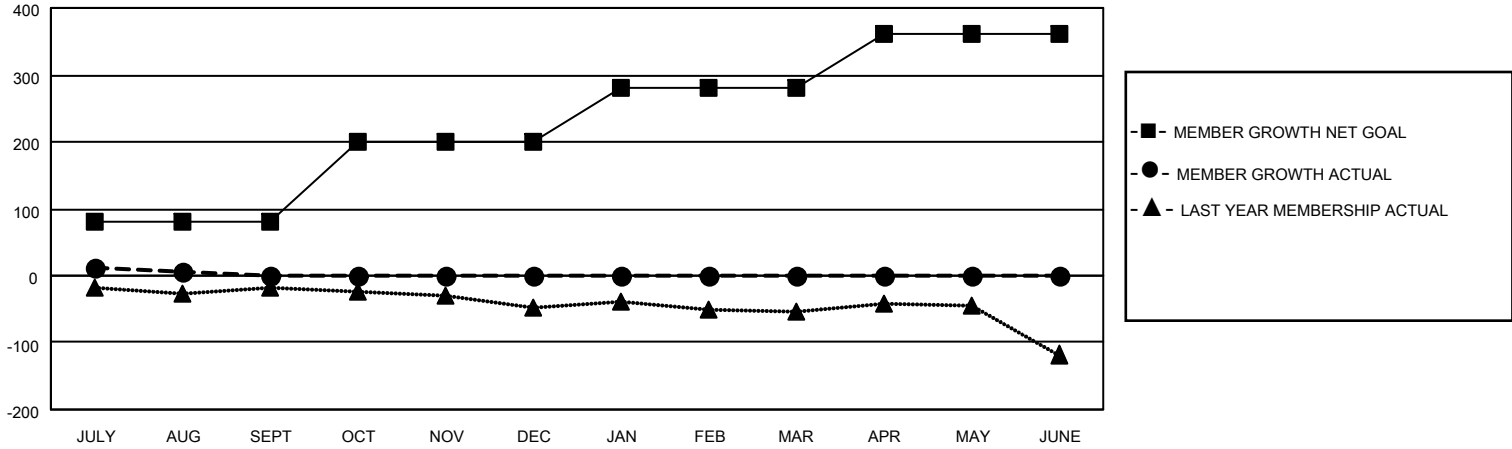
Clubs			
RESULTS FOR 2021-2022			
QUARTER	NEW CLUB GOAL	NEW CLUBS	DROPPED CLUBS
JULY/AUG/SEPT	1	0	0
OCT/NOV/DEC	2	0	0
JAN/FEB/MAR	1	0	0
APR/MAY/JUNE	1	0	0

Members			
RESULTS FOR 2021-2022			
QUARTER	MEMBER GROWTH NET GOAL	MEMBER GROWTH ACTUAL	DROPPED MEMBERS ACTUAL (including transfers)
JULY/AUG/SEPT	80	38	26
OCT/NOV/DEC	120	0	0
JAN/FEB/MAR	80	0	0
APR/MAY/JUNE	80	0	0

GOALS AND ACTUAL NEW CLUBS CUMULATIVE



GOALS AND ACTUAL MEMBERS CUMULATIVE



DROPPED CLUBS: 0	
DROPPED MEMBERS	
DECEASED	2
CLUB CANCELLED	0
OTHER	24
TOTAL	26

14 CLUBS OF 46 ADDED 1 OR MORE NEW MEMBERS

[CLICK HERE FOR CUMULATIVE MEMBERSHIP DATA](#)

<u>GENDER DISTRIBUTION</u>	
MALE	585 (51.00%)
FEMALE	562 (49.00%)
NON BINARY	0 (0.00%)
PREFER NOT TO ANSWER	0 (0.00%)
TOTAL FAMILY UNIT MEMBERS	326
FAMILY MEMBERS PAYING HALF DUES	166